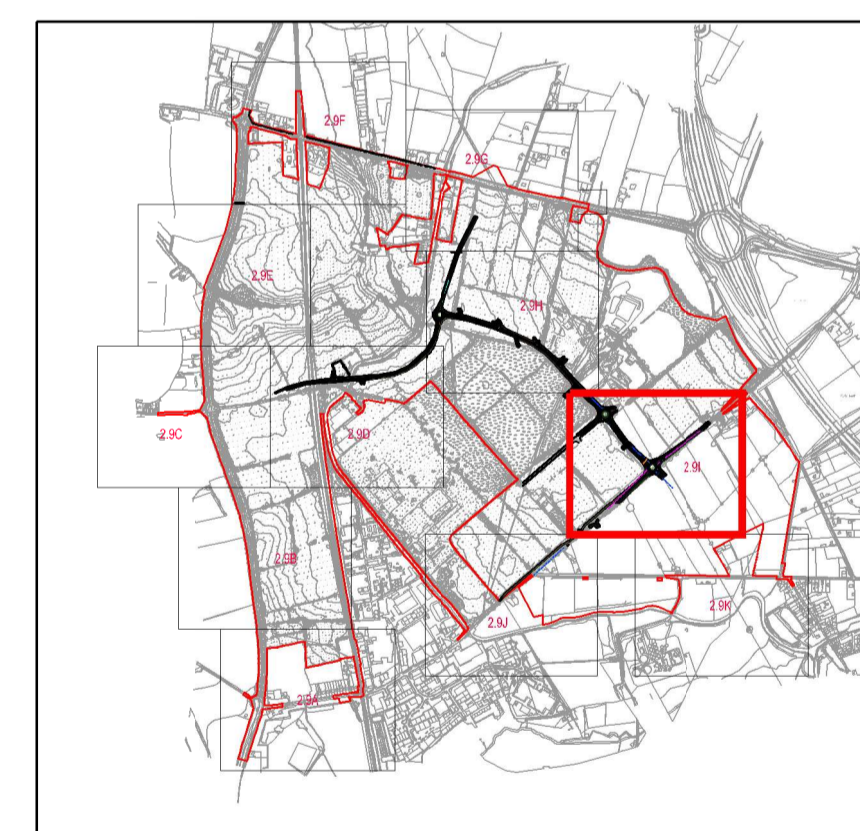


- KEY**
- ORDER LIMITS
 - FOOTWAY / CYCLEWAY
 - ROAD
 - VERGE / GRASS
 - UNADOPTED FOOTWAY / CYCLEWAY
 - UNADOPTED HIGHWAY
 - TACTILE PAVING

NOTE:
LIMITS OF DEVIATION SHOWN ON THE WORKS PLANS
(DOCUMENT SERIES 2.2) AND SET OUT IN ARTICLE 4 OF THE DEVELOPMENT
CONSENT ORDER.
POSITION OF PLOT ACCESSSES IS INDICATIVE



- F - 05/06/2018 - RED LINE UPDATED
- E - 08/05/2018 - MINOR AMENDMENTS
- D - 20/03/2018 - MINOR AMENDMENTS
- C - 02/03/2018 - RED LINE UPDATED
- B - 12/12/2017 - ACCESS TO SOUTH UPDATED
- A - FIRST ISSUE

Project THE WEST MIDLANDS RAIL FREIGHT INTERCHANGE ORDER 201X	
Drawing Status SUBMISSION	
Drawing Title GENERAL ARRANGEMENT PLAN 109 AND INSET A	
Regulation 5 (2) (o)	Document 2.9I
Drawn NW Date: JUNE 2018	Scale 1:1000
Reviewed JF	Rev. F
Drawing No. WSP-70001979-GA-109	